

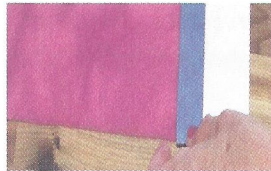
No Sew Fleece Blanket Methods

This method will help volunteers make fringe that is straight, even, and neat.



Cut a strip of cardboard as wide (no wider than 2" - 3") as you want your fringe to be long. Line up along edge of fleece.

The longer you make the fringe, the less blanket you have.



Line up masking tape with the edge of the cardboard template.

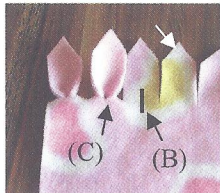
Remove cardboard template.



Draw lines on the other side of the cardboard template every 1/2" (or however wide you want your fringe). Lay this template along the edge of the masking tape. Cut fringe.

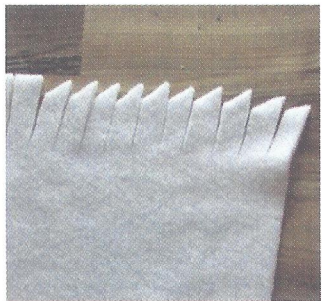


Cut with pinking shears - You only need to cut the length of the blade which makes a straighter cut.



"Picket Fence" "Bunny Ears"

Picket Fence: Cut fringe 1 1/4" wide and 2" long. (A) Cut ends as shown in picture. Optional- continue for Bunny Ears: (B) Cut a small slit (no longer than 1/4" long) at the base of the fringe. (C) Pull fringe through the hole to make a "bunny ear."



"Jungle Grass"
After cutting straight fringe, cut a corner from each strip of fringe.

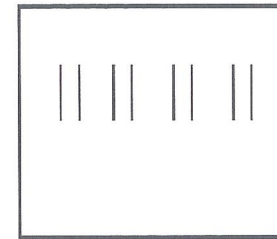
Adding Fringe

Cut strips of fleece 1/4" - 3/8" wide X 6" long. If the stretch goes the long way of the strip, you will get a curly fringe as shown in the last picture.

Cut small slits in the edge of the fleece blanket approximately 1" from the edge. Pull through as shown in pictures below. Pull on the fringe to make it curl if you cut with the stretch of the fabric. You can make this fringe on the two ends or all the way around.



Adding ties

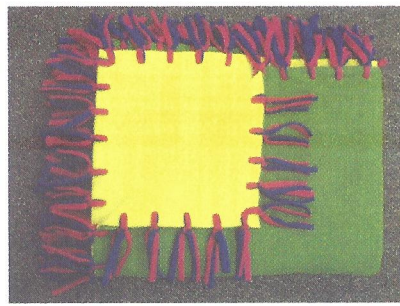


Cut 1/2" slits in pairs along narrow sides of fleece. Cut 1/2" X 6" strips, thread through slits and tie as shown.

More No-Sew Ideas:

- Fleece blankets can also be finished with a wavy-blade rotary cutter if the volunteer has experience using a rotary cutter. This is an especially nice finish on a baby blanket. Polyester fleece will dull the blades fairly quickly.
- Gently round the corners and fringe all the way around.
- If you do use two layers of fleece tied together by knotting the fringe, please don't tie the knots too tight - it draws the fleece up like a bowl or basket instead of a flat blanket!

“No-Sew” Tassel Blanket



Supplies:

- 2 pieces of fleece (2 yards each)
- 1 bundle Fleeces Pieces® Tassels

Tools

- Rotary Cutter and mat or pair of sharp scissors
- Pinking shears or pinking rotary blade
- Crochet hook
- Seam ripper

Directions:

1. Stack the 2 pieces of fleece back to back on a cutting mat. Though most crafters agree that there is no “wrong” side, the exception is fabric with letters or writing which needs to face in a readable position. Trim edge evenly with rotary cutter or scissors, removing selvages.
2. To join top to bottom: using seam ripper, insert cutting edge to make small vertical slits through both layers 1” from the edge and about 1” apart. (Fig. 1)
3. Place crochet hook through slit and hook one Fleeces Pieces® tassel on one end. Pull half of the tassel length through slit. (Fig. 2)
4. Even tassel ends. (Fig. 3)
5. Tie the two ends of the tassel together in the following way:
 - a. tie the first tie to meet the edge of the fabric. (Fig. 4)
 - b. repeat the tie to form a knot. (Fig. 5)
6. Repeat steps 2 through 4 all around.
7. When you come to the corners, the same slit will be used for the last Fleeces Pieces® tassel on the side completed and the first tassel on the new side.

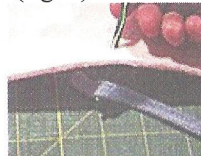
Variations:

Use 2 Fleeces Pieces® instead of one per slit. Contrasting colors are especially fun! Round corners before tying, using 3 or more Fleeces Pieces® per hole. This pattern works equally well with single layer fleece blankets.

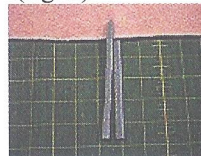
(fig. 1)



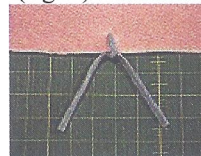
(fig. 2)



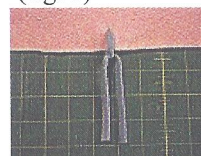
(fig. 3)



(fig. 4)



(fig. 5)



Sewn Fleece Blanket Methods

“Single Layer Texas Fleece Blankets”

(Pat Vanderwater)

Most popular size is 54” x 57” (that is 1 1/2” yard cut with the selvage trimmed).

Trim the selvage off the fleece with a wavy blade rotary cutter and straighten fleece on all sides. (The wavy edge gives you a guide for cutting the fringe.) You can use a straight edge blade if you don’t have a wavy blade.

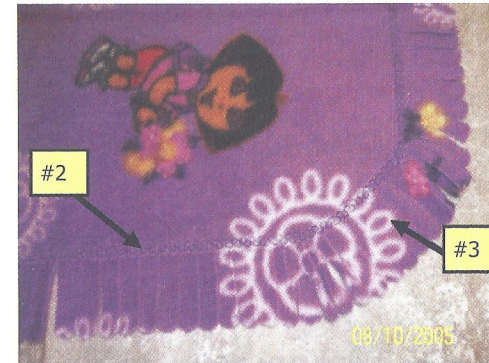
(1) Round the corners - if you don’t have the radial ruler, use a pizza pan or plate as a guide.

Important - keep the wavy blade at least 1/4” from the ruler or you will nick the edges of the plastic ruler and dull the blade.

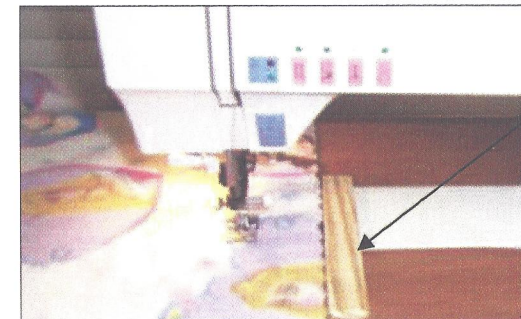
(2) Sew a zigzag stitch or simple decorative stitch 2” from the edge all the way around the blanket.

(3) Clip all edges to make fringe - if you used the wavy blade - clip in the notch and you will get a perfect 1/2” clipped fringe.

If you used a straight rotary blade, cut about 3/4” wide for the fringe.



The Radial Curve Corner Rule is available at www.katielane.com/Pages/Korners.html. You can also find these radial curve rulers at good quilt shops. Pat says she has both sizes and uses them constantly.



Helpful Hint:

Pat’s husband made this sewing guide from screen mold that he cut and sanded smooth. She puts double stick Scotch tape on the back each time she uses it.

You can also use a stack of Post-it notes, or build up a guide with masking tape.

Fleecy Loop Blanket

You will need:

Polar Fleece: 1 1/2 yard piece or choose your own custom size. (Fleece is usually 50-60" wide)

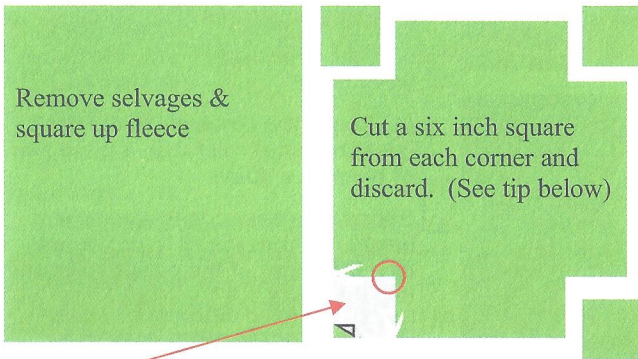
This blanket is simply made in 4 easy steps.

Before you begin, trim off selvage edges and square uneven edges as needed. (Fig. 1)

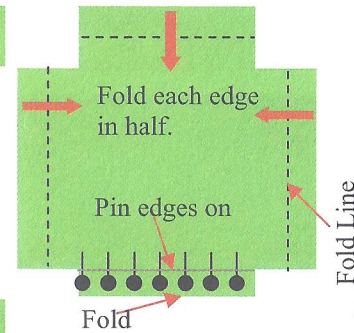


Step #1: (Fig.2)

Cut a six inch square from each corner of the fleece.



Step #2: (Fig. 3) Fold edges in half and pin.



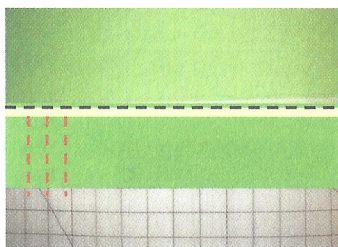
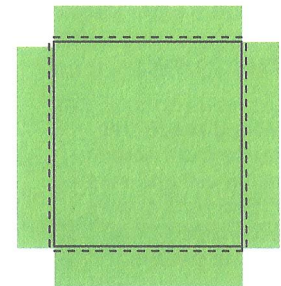
Tip: Cut a 6" piece of fabric or batting to use as your corner template. (Fig. 2) It won't slip and it will make cutting easier. Using your ruler and rotary cutter cut vertically and horizontally—(arrows) ALMOST to the corner (red circle) but NOT QUITE. Then use your scissors to finish the corner cut. This will give you a crisp, clean cut and you won't cut into the neighboring fringe.

Step #3:

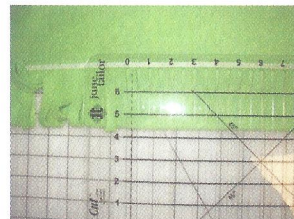
Sew each edge (dashed line) close to cut edge. (Fig 4)

Step #4:

Using a rotary cutter and ruler or "Shape Cut", cut fringe at 1/2" intervals. Be careful **NOT** to cut through stitching. (Fig. 5 & 6)



Tip: Place a piece of masking tape just below the line of stitching. Cut up to the tape but not through it – to protect the seam. Cut fringe at 1/2" intervals.



Tip: "Shape Cut" rulers are excellent for cutting fringe. Turn the Ruler upside down and place the cutting slots just below the stitching line. This will keep you from cutting through the stitching and also allow you to cut your fringe quickly without moving your ruler very often.

Tip: Be very careful NOT to stretch fleece as you're sewing. Pin well and do not pull on fabric while sewing.

Fleecy Loop Blanket (variation)

You will need:

Polar Fleece: 1 1/2 yard piece or choose your own custom size. (Fleece is usually 50-60" wide)

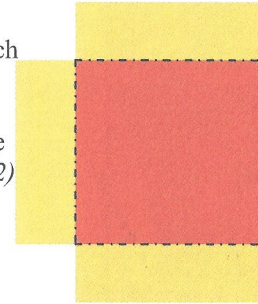
Contrasting Polar Fleece strips: 4 strips—8" wide and the length of the sides of your large piece.

This is a great way to use those smaller pieces of fleece by adding a contrasting edge.

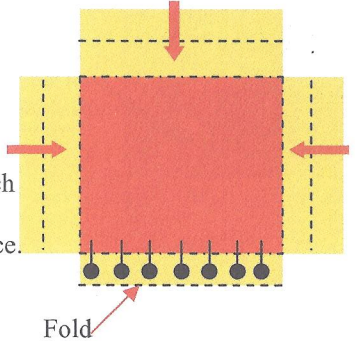
Before you begin, trim off selvage edges and square uneven edges as needed. (Fig. 1)

Remove selvages & square up fleece

Step #1: Stitch one 8" strip to each side of square fleece. (Fig. 2)



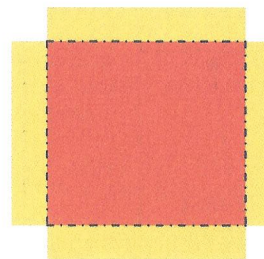
Step #2: Fold each coordinating side to the previous stitch line. Pin securely in place. (Fig. 3)



Using your ruler and rotary cutter cut vertically and horizontally—(arrows) ALMOST to the corner (red circle) but NOT QUITE. Then use your scissors to finish the corner cut. This will give you a crisp, clean cut and you won't cut into the neighboring fringe.

Step #3:

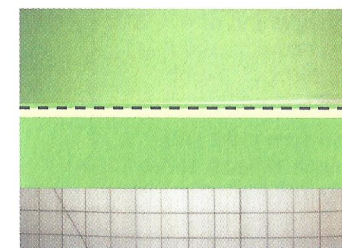
Sew each edge (dashed line) close to cut edge. (Fig 4) Proceed with Step #4 as in original instructions.



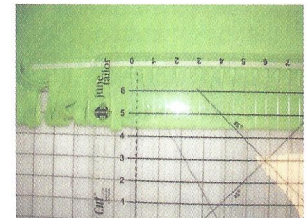
Tip: Be very careful NOT to stretch fleece as you're sewing. Pin well and do not pull on fabric while sewing.

Step #4:

Using a rotary cutter and ruler or "Shape Cut", cut fringe at 1/2" intervals. Be careful **NOT** to cut through stitching. (Fig. 5 & 6)

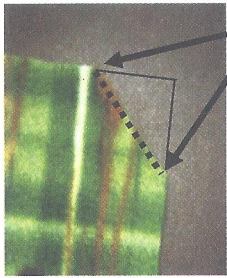


Tip: Place a piece of masking tape just below the line of stitching. Cut up to the tape but not through it – to protect the seam. Cut fringe at 1/2" intervals.



Tip: "Shape Cut" rulers are excellent for cutting fringe. Turn the Ruler upside down and place the cutting slots just below the stitching line. This will keep you from cutting through the stitching and also allow you to cut your fringe quickly without moving your ruler very often.

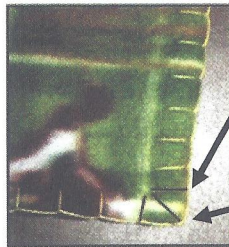
Blanket Stitch with Mitered Corners (Laurale Scott)



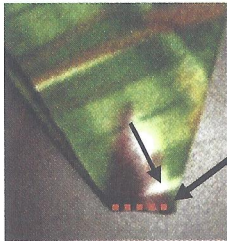
Mark points 1 1/2" down from corner on each side -all 4 corners. Draw a line from point to point & cut along this line.



Sew a blanket stitch using 3/2 pearl cotton along sides.



Complete corners as shown. (Stitches accented for better visibility.)



Fold right sides together. (fleece curls to wrong side when stretched)



Stitch narrow seam leaving 1/4" not sewed where raw edges meet.

Turn right side out and pin, turning under 1/4".

It is important on the corner to catch a small bit of the blanket tip so that the stitch stays in place.

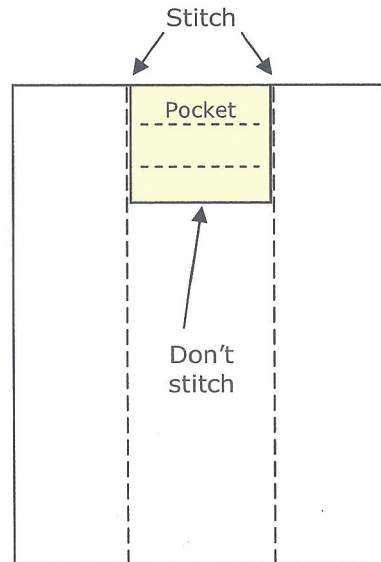
Making a Store Bought Fleece Blanket into a Linus Blanket (or use this method for a fleece blanket or quilt that you have made)

Cut out two pieces of fabric and one piece of batting approximately 18 1/2" square (Smaller if your blanket isn't very big - pocket should be about a third the width of the blanket). Put fabric right sides together and place batting on top of fabric. Sew all the way around (with batting on bottom), leaving an opening of 4" - 5" on one side to turn (this is the same method used for making quilts envelope style. Some quilters call this birthing a quilt).

Trim corners of the pocket and turn right side out. Stitch opening closed. Quilt at least three lines of quilting to hold batting in place (see dashed lines on pocket).

Place pocket at end of blanket & stitch to blanket on three sides (see diagram). A zigzag stitch is more durable.

Fold blanket into thirds - pocket will be on top (along dashed lines on diagram), then fold blanket up and insert into pocket as you turn the pocket inside out.



Looped or Optional Braided Finish (Mary Ann Overturf)



Cut out 3" squares from each corner of fleece (after removing selvedge edges).

Place a strip of masking tape 3" from the edge of the fleece on all four sides. Turn up the edge of the fleece to meet the masking tape. Pin and sew the raw edge using a zigzag stitch. Cut the fringe in 1/2" inch strips stopping the cut 1/4" from the stitching.

Optional: After cutting the loops, make a braided edge by "finger crocheting" one loop through the next loop. Go all the way around the blanket using a large crochet hook to pull loops through. Tuck the last loop into the first one and hand stitch to anchor.

Another option for the Looped Finish is to sew a 6" piece of contrasting or coordinating fleece to each end of the blanket. Fold in half, sew down with a zigzag stitch & cut the loops as above.

Shell Stitch (Susan Murphy)

Trim the selvedge edges off and even up fleece on all sides. Round off corners using a Curve Corner Ruler or a plate for a template. Modify the machine's standard hemstitch - lengthen the stitch to at least 2 and increase the width as far as possible. You may need to reverse (mirror image) the stitch so that the zigzag in the stitch goes just off the edge of the fleece. This is an especially nice soft finish for a baby blanket.



More ideas for finishing fleece blankets:

No matter what method is used to finish fleece blankets, remove the selvedge edges (the wavy, usually white edges) first and even up all sides. The blanket looks much nicer if this is done.

Turn up a 1 1/2" fold to the right side, stitch along the raw edge with a zigzag or decorative stitch or sew rickrack or decorative ribbon (not scratchy) over the raw edge.

Round corners and add a "border" by stitching a decorative stitch all the way around the blanket about 2" in from the sides or sew rick-rack on with a zigzag stitch about 2" from the sides.

Fleece blankets can be finished by serging all the way around the blanket (gently curve the corners first).

Finish blanket by adding a coordinating homemade or purchased binding.